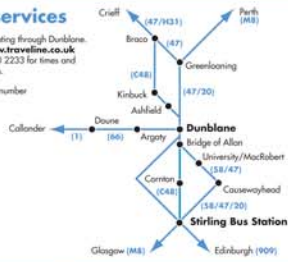


Dunblane Area

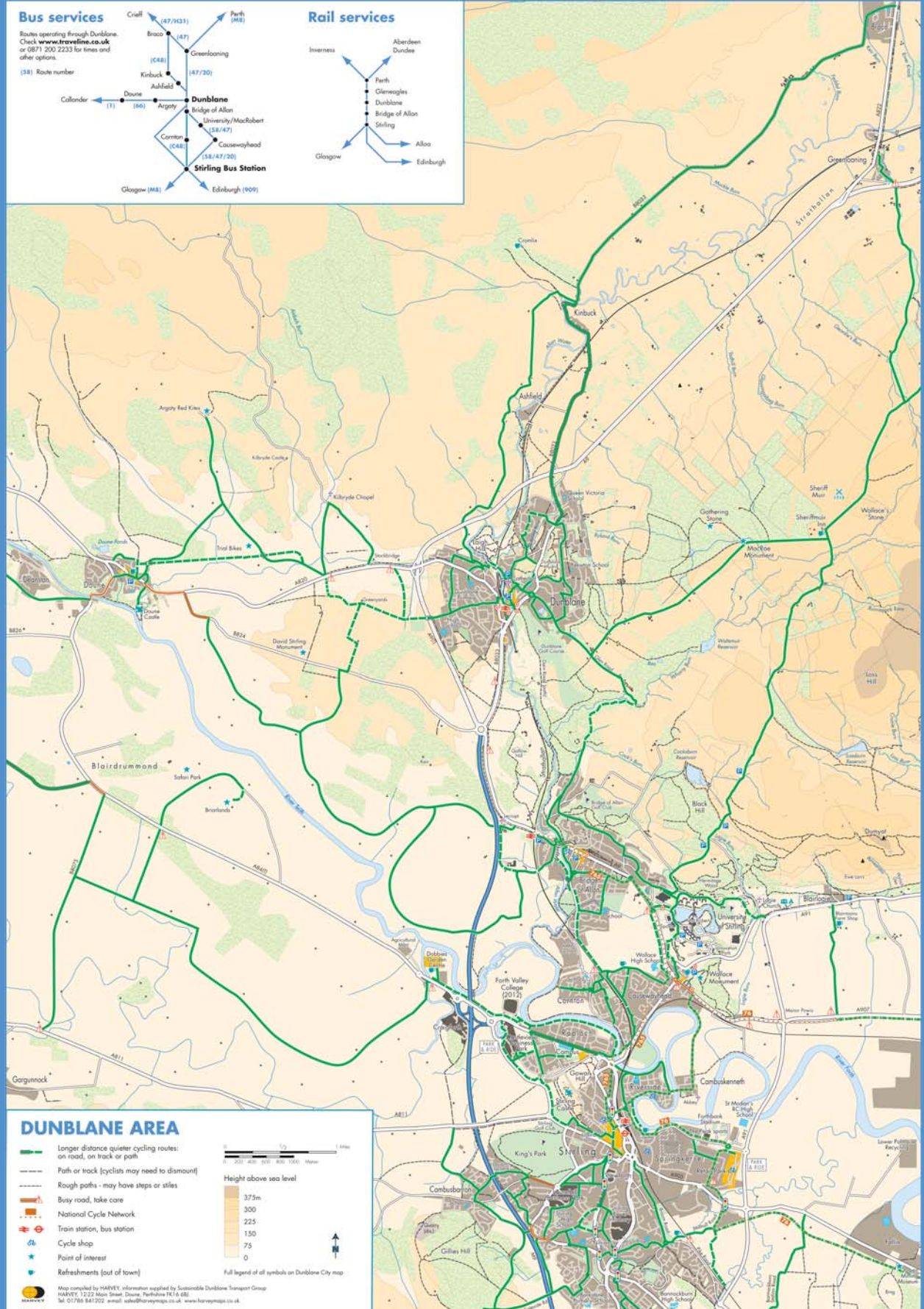
Bus services

Routes operating through Dunblane. Check www.traveline.co.uk or 0871 200 2233 for times and other options.

(58) Route number



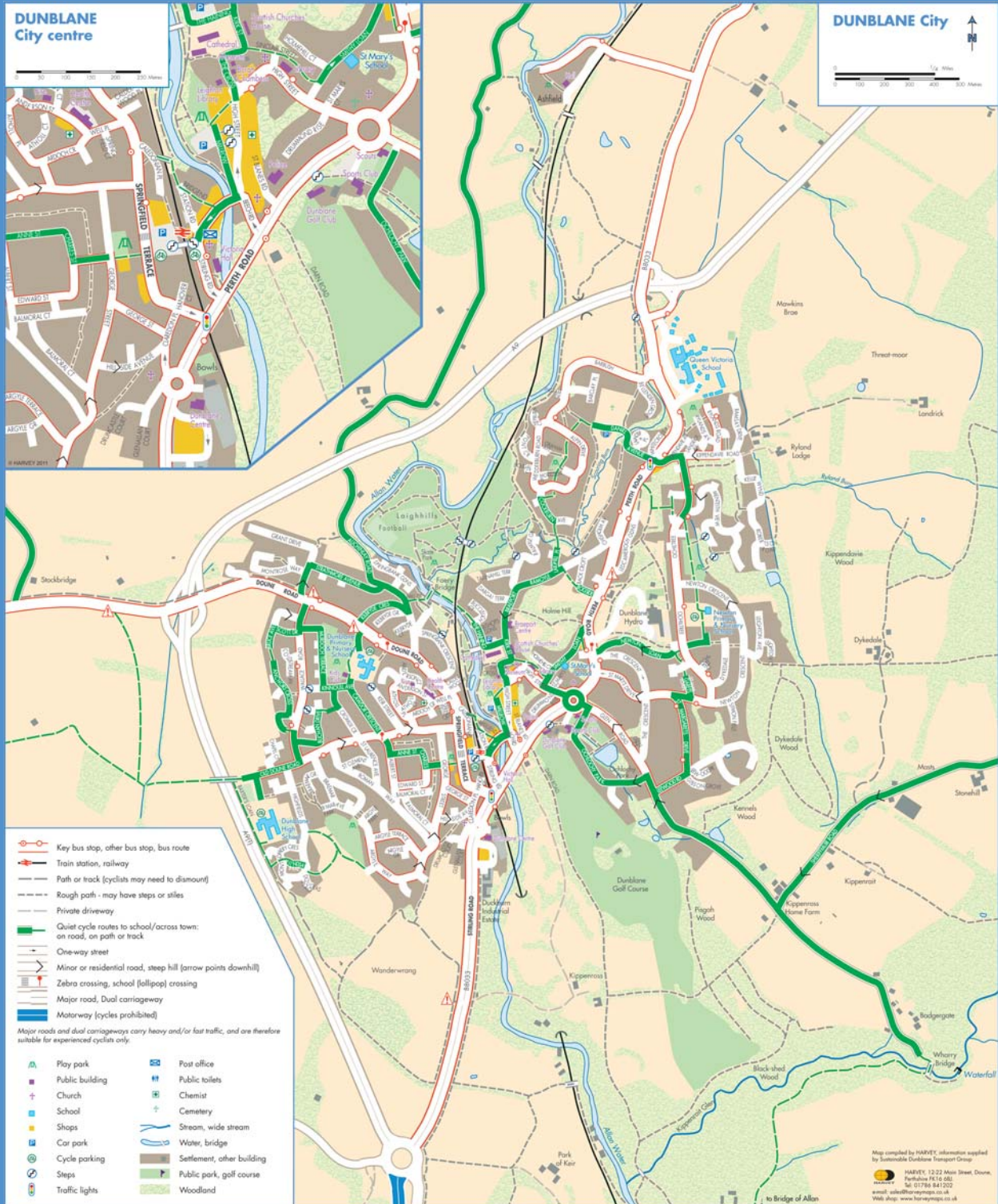
Rail services



DUNBLANE AREA

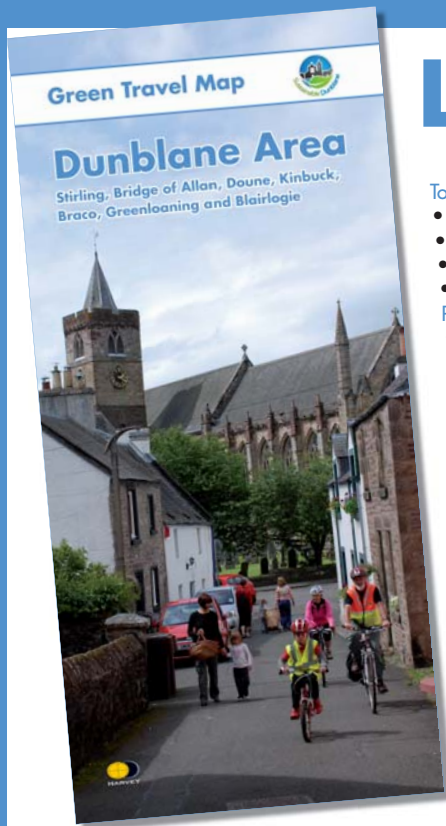
- Longer distance quieter cycling routes: on road, on track or path
 - Path or track (cyclists may need to dismount)
 - Rough paths - may have steps or stiles
 - Busy road, take care
 - National Cycle Network
 - Train station, bus station
 - Cycle shop
 - Point of interest
 - Refreshments (out of town)
- 0 200 400 600 800 1000 Metres
 Height above sea level
 375m
 300
 225
 150
 75
 0
- Full legend of all symbols on Dunblane City map
- Map compiled by HARVEY, information supplied by Sustainable Dunblane Transport Group
 HARVEY, 1227 Main Street, Doane, Perthshire PE16 6BE
 Tel: 01766 5441202 e-mail: info@harveymaps.co.uk www.harveymaps.co.uk

Dunblane Area



CITY CENTRE

Dunblane Area



Local Information

Toilets available for public use (during opening hours):

- Dunblane Hotel, opposite station (no disabled access)
- Dunblane Library
- Burgh Chambers
- Disabled toilet on platform 1 (RADAR key, also available at ticket office)

Places of interest – via High Street

- Cathedral (450m): open to visitors most days
- Museum 01786 825691: Easter – October, Mon – Sat: local tourist information
- Leighton Library: May – September, Mon – Sat, 11-1.00pm or through 01786 822296
- High Street shops and cafes: traditional opening hours
- Dunblane library 01786 823125: free WIFI, free computer for 2 hours, local maps & history books

Sports

- Golf Club and Sports Club (tennis PAYG) - via steps opposite police station
- Dunblane Centre and Bowling club – Perth Road south
- Skate Park, football – in Laighills Park

Walks in the area – maps and leaflets from library

- Town Heritage walk, Green walks including Holmehill - leaflets from museum
- River walks and Laighills Park – upstream from Millrow and Bridgend north
- Ashfield (2 miles) – up river via Laighills, or old Ramoyle
- Medieval Darn Road to Bridge of Allan (2.5 miles) - starts opposite police station
- Sheriffmuir (3 or 4 miles) - via Holmehill, Hydro, Dykedale

Quiet Cycle routes – see Green Travel Map

- Doune castle (5 miles) using NCN 765 Old Doune Road, or via riverside and Kilbryde church
- Bridge of Allan (3 miles), Stirling University and Stirling (8 miles) – via Glen Road
- Braco/Auchterarder - via Auchinlay or Glen Road and Sheriffmuir

Taxis

- Moores 01786 824888
- D & S 01786 821010
- Citicabs (wheelchairs) 478618

Onward travel by bus - service details from Traveline 0871 200 2233

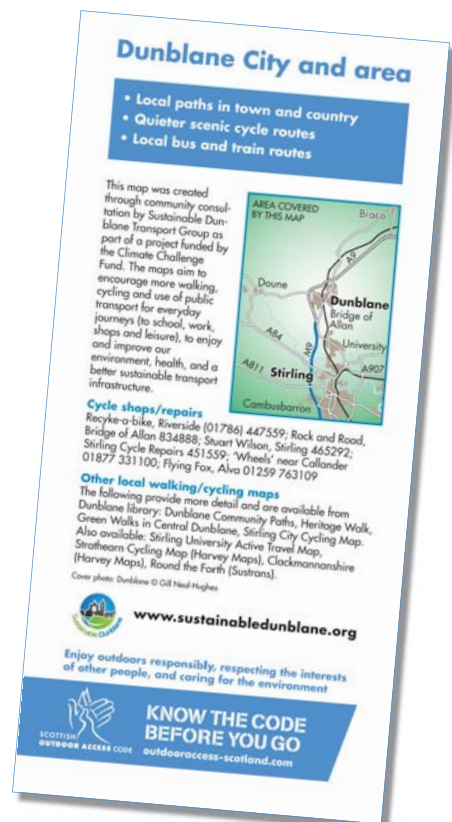
www.traveline.co.uk

- Citylink M8: Glasgow-Stirling-Dunblane-Perth-Dundee: bus stop by/opposite police station
- Greenloaning, Blackford, Auchterarder, Dunning, Doune/Callander (via Stirling): above bus stops
- Crieff, Stirling, local villages: above bus stops and bus stop opposite railway station
- Direct (infrequent) service to Doune/Callander: bus stop on Doune Road by Tesco

Local Accommodation

- Ciar Mhor B&B, Auchinlay Road 01786 823371
- Chimes House B&B, Cathedral Square 01786 822481
- Cromlix House (4 miles), near Kinbuck 01786 822125
- Dunblane Hotel – opposite station 01786 822178
- Dunblane Hydro, Perth Road 01786 822551
- Sheriffmuir Inn (4 miles), Sheriffmuir Road 01786 823285
- Westlands Hotel, Doune Road 01786 822118

Information provided by Dunblane Development Trust Environment Group, acknowledging DTT Dunblane in Bloom for the station floral displays, Sustainable Dunblane Transport Project for the Green Travel Maps, and the support of ScotRail.



www.sustainedunblane.org

Enjoy outdoors responsibly, respecting the interests of other people, and caring for the environment



KNOW THE CODE BEFORE YOU GO

SCOTTISH OUTDOOR ACCESS CODE outdooraccess-scotland.com